



VILLAGE ESTATES

• EST.1993 •



93 Main Road, Sidcup, Kent DA14 6ND

Tel: 0208 302 1002

www.village-estates.com

Email: sidcup@village-estates.com



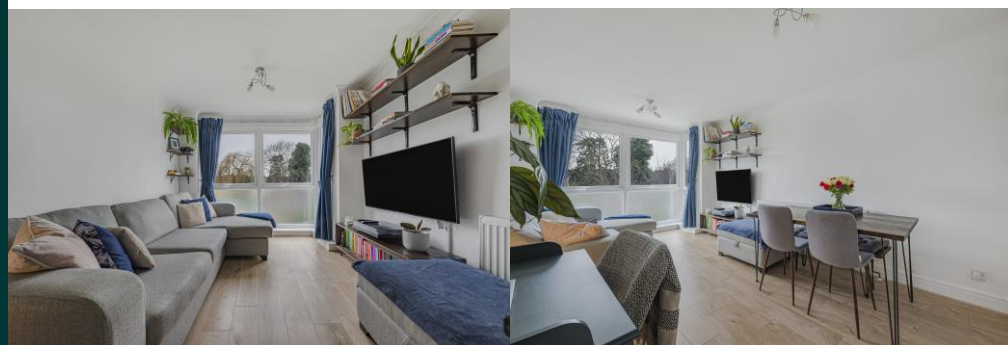
**WELL PRESENTED THROUGHOUT
GARAGE EN BLOC**

**WELL MAINTAINED COMMUNAL
AREAS AND GARDENS**

**SHORT WALK TO HIGH ST AND
STATION**

GAS CENTRAL HEATING

133 YEAR LEASE REMAINING



15 Chudleigh Highview Road
Sidcup, DA14 4EZ

£250,000

Situated in a popular location only minutes' walk from both Sidcup high street and main line station is this well presented one bedroom top floor flat. Offered with a long lease, low monthly service charges, no ground rent and garage en bloc your early viewing is highly recommended to avoid disappointment.

EPC RATING: D

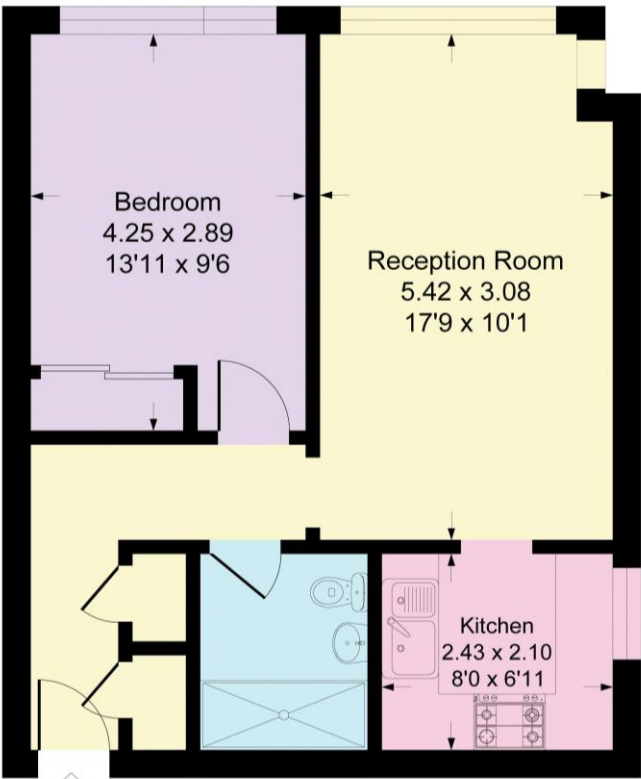
COUNCIL TAX BAND: C

TENURE: Leasehold

LEASE TERM: 133 years remaining



Approximate Gross Internal Area = 46.5 sq m / 501 sq ft



Second Floor

CONSUMER PROTECTION FROM UNFAIR TRADING REGULATIONS 2008

Please note that any services, heating system or appliances have not been tested, and no warranty can be given or implied as to their working order. You are advised to obtain verification from your solicitor or surveyor. References to the tenure of a property are based on information supplied by the seller. We have not had sight of the title documents and a buyer is advised to obtain verification from their solicitor. Items shown in photographs are not included unless specifically mentioned within the sales particulars, but may be available by separate negotiation. Whilst every attempt has been made to ensure the accuracy of the floor plan contained here, measurements of doors, windows, rooms and any other items are approximate and no responsibility is taken for any error, omission, or mis-statement. We advise you to book an appointment to view before embarking on any journey to see a property, and check its availability. The accuracy of these details are not guaranteed and they do not form part of the contract.